

BALL VALVE

AL 26-PZ

Description

AL 26-PZ is a compact two-piece flanged ball valve with full bore and mounting plate according to ISO 5211. Manual with lockable hand lever. Free-floating ball and antistatic and supported stem and self-adjusting packing.

Applications: Shut-off valve for liquids, gases and neutral chemicals.

Type

AL 26-PZ-94-TTTG	Carbon steel	Face-to-face according to EN 558 series 100
AL 26-PZ-96-TTTG	Stainless steel	

TTTG refers to seat, stem packing and primary body seal in PTFE and secondary body seal in graphite.

Marking: The valve is marked 94 or 96.

Dimension: DN 25-100

Connection: Flange (threaded flange bore, use bolt)

Pressure class: PN 40 - DN 20-80
PN 16 - DN 100

Temperature: See pressure/temperature diagramme.

Approvals

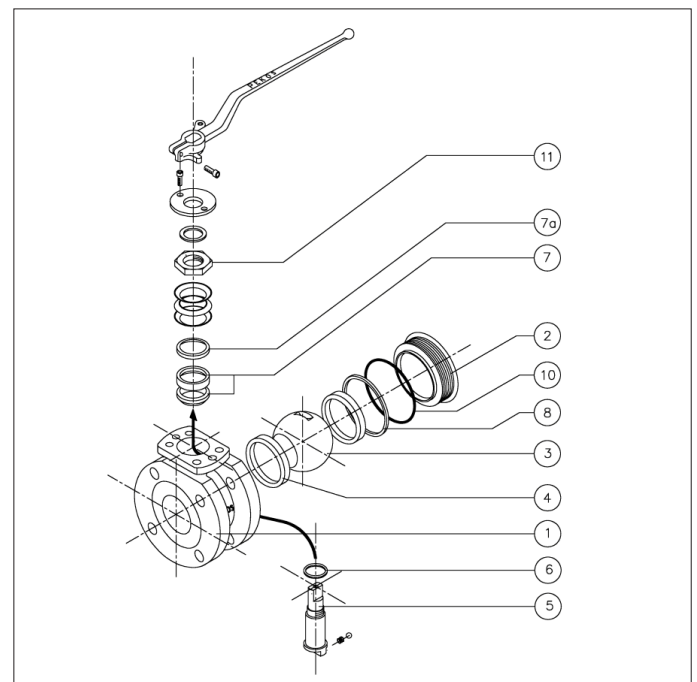
CE/PED 2014/68/EU
TÜF.AD-MERKBLATT WO
TA-LUFT
SIL 3
Fire-Safe

Material specification

No	Part	Carbon steel	Stainless steel
1	Body 1	1.0619 / A216 WCC	1.4408 / A351 CF8M
2	Body 2	1.0352	1.4401 / AISI 316
3	Ball	1.4408 / A351 CF8M	
4	Seat	PTFE (T)	
5	Stem	1.4401 / AISI 316	
6	Stem seal	PTFE + FG (R)	
7	Packing 1	PTFE (T)	
7a	Packing 2	1.4401 / AISI 316	
8	Primary body seal	PTFE (T)	
10	Secondary body seal	Graphite (G)	
11	Stem nut	1.4305 / AISI 303	

Optional

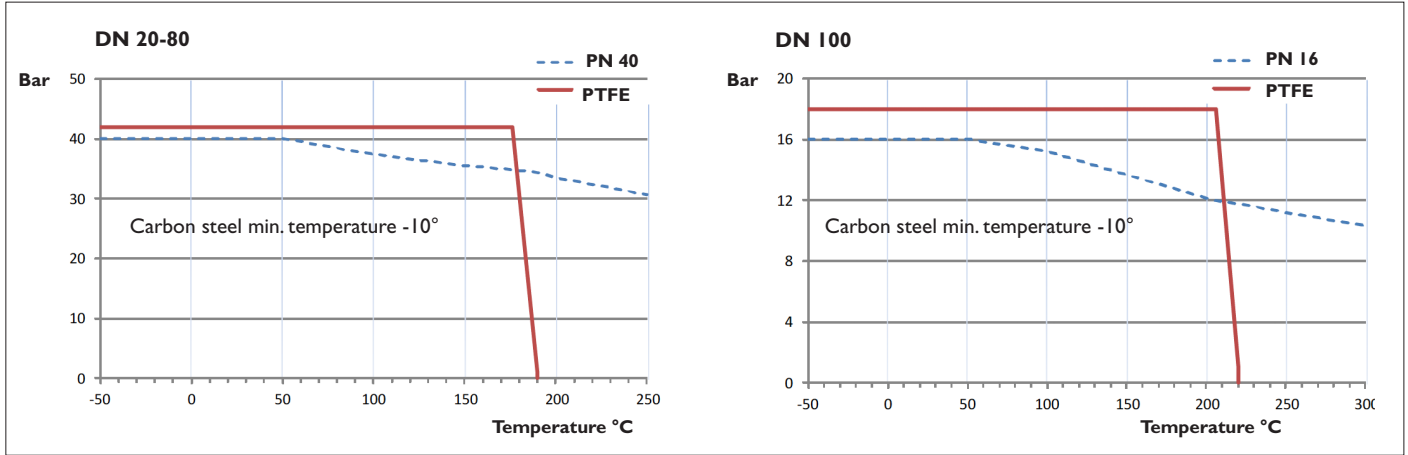
- ANSI
- Electrical actuator
- Pneumatic actuator



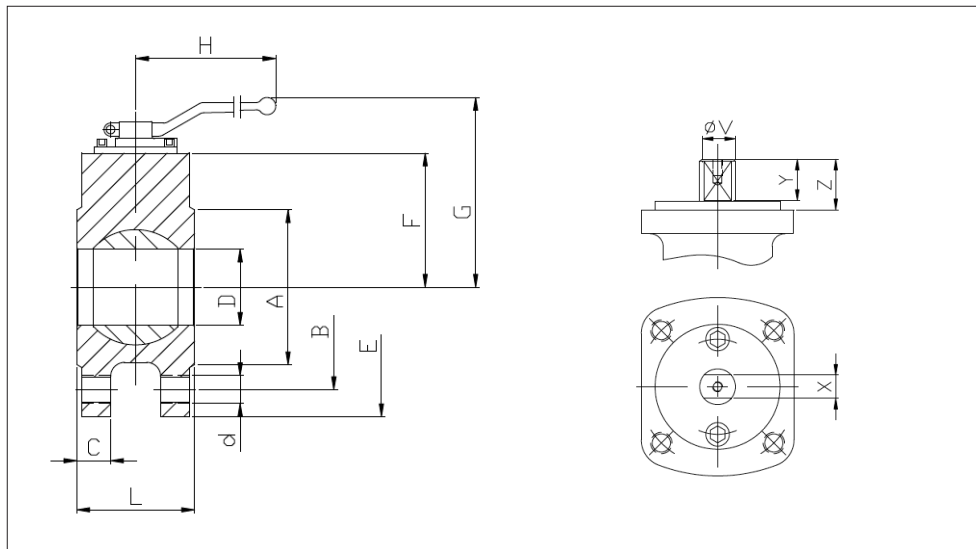
BALL VALVE

AL 26-PZ

Pressure / Temperature



Dimensions



DN	PN	D	L	E	A	B	C	F	H	G	V	X	Y	Z	n x d	ISO 5211	Nm* PN 16/40	Weight, kg
15	40	15	35	102	45	65	-	44,5	185	104	14	11	12,6	14	4 x M12	F03	12	2
20	40	20	39	105	60	75	-	53	185	113	14	11	12,6	14	4 x M12	F03	14	2
25	40	25	44	115	68	85	18	56	185	116	14	11	13,5	14	4 x M12	F05/1	18	3
32	40	32	52	142	76	100	18	64	185	123	18	14	19,5	20	4 x M16	F05/2	30	5
40	40	40	64	150	88	110	18	75	293	139	22	17	30	30	4 x M16	F07	40	6
50	40	50	83	165	102	125	20	83	293	147	22	17	30	30	4 x M16	F07	65	7
65	40	65	105	185	122	145	22	95	293	159	22	17	30	30	8 x M16	F07	85	10
80	40	80	121	200	138	160	24	112	450	198	28	22	40	40	8 x M16	F10	130	14
100	16	98	152	220	158	180	20	125	450	220	28	22	22	40	8 x M16	F10	110	20

*Torque (Nm) at room temperature and maximum pressure for the respective pressure class (without any safety factor)

Installation

The valve can be installed in horizontal and vertical lines. The valve is maintenance free but should be operated at regular intervals depending on the installation.



Telephone +46 10 455 97 00 • sales@axel-larsson.se • www.axel-larsson.se

Head Office: Truckvägen 12, P.O. Box 805, SE-194 28 Upplands Väsby (Stockholm), Sweden.