

BALL VALVE

AL 36-K256

ANSI Class 2500

Description

AL 36-K256 is a high quality three piece ball valve in stainless steel with full bore and mounting plate according to ISO 5211. Body in forged material with double body seals and free-floating ball. Designed as a shut-off valve for applications with high pressure. Anti-blowout proof stem, antistatic device, self-cavity pressure relief and autoadjustable packing.

Pressure class: ANSI Class 2500
(see pressure/temperature diagramme)

Connection:

- Weld B16.25
- Thread NPT/BSPP
- Flanges ANSI B16.5

Other versions: The valve is available in a number of different pressure classes, dimensions, etc. Please contact us for more information.

Approvals

- CE/PED 2014/68/EU
- ATEX 2014/34/EU
- Fire Safe
- SIL 3 capable

Standards

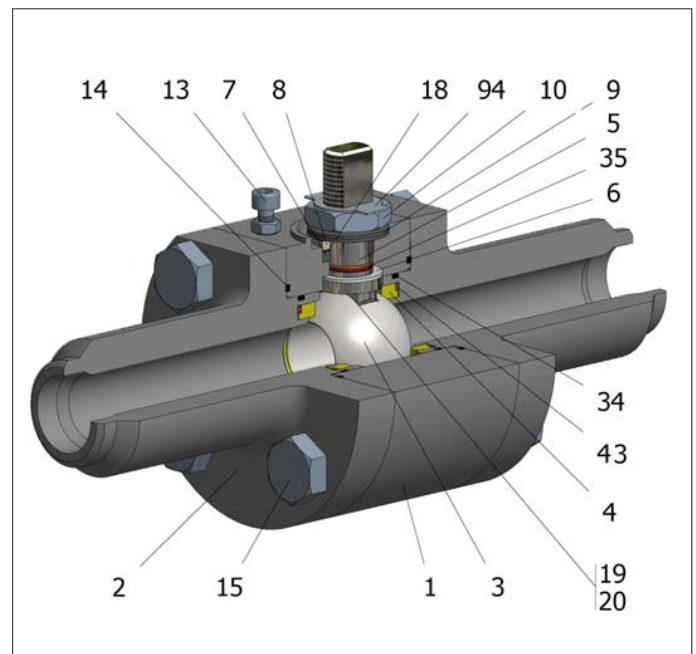
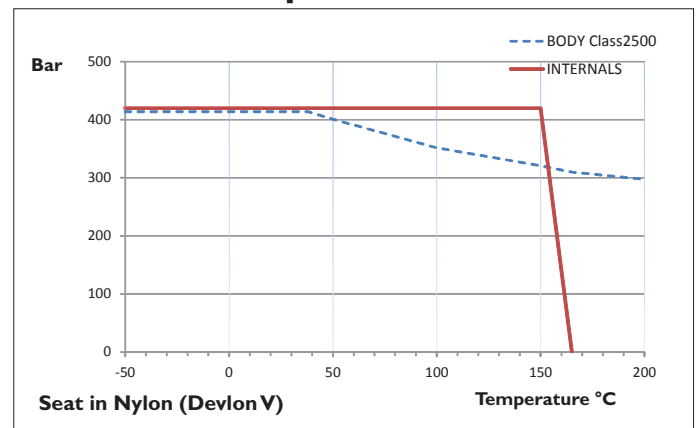
- Top flange ISO 5211
- Materials according to NACE MR0175
- Face to face ANSI B16.10
- Design B16.34
- Testing API 598, BS 6755-1

Material specification

Pos	Part	Material
01	Body 1	Stainless steel A182 F316
02	Body 2	Stainless steel A182 F316
03	Ball	Stainless steel AISI 316
04	Seat	Devlon V
05	Stem	Stainless steel AISI 316
06	Stem seal	PEEK
07	Stem packing I	Graphite
08	Gland packing	Stainless steel AISI 316
09	Spring washer	Stainless steel AISI 301
10	Stem nut	Stainless steel AISI 304
13	Cover bolt	Stainless steel (316)
14	Body seal I	Graphite
15	Body bolt	A193 B8M
16	Handle	WCB
18	Thrust washer	PTFE (modified) + CG
19	Spring	Stainless steel AISI 316
20	Antistatic ball	Stainless steel AISI 316
34	Body seal 2	FKM
35	O-ring stem	FKM
43	Seat seal	FKM
94	Stop washer	Stainless steel AISI 304



Pressure / Temperature

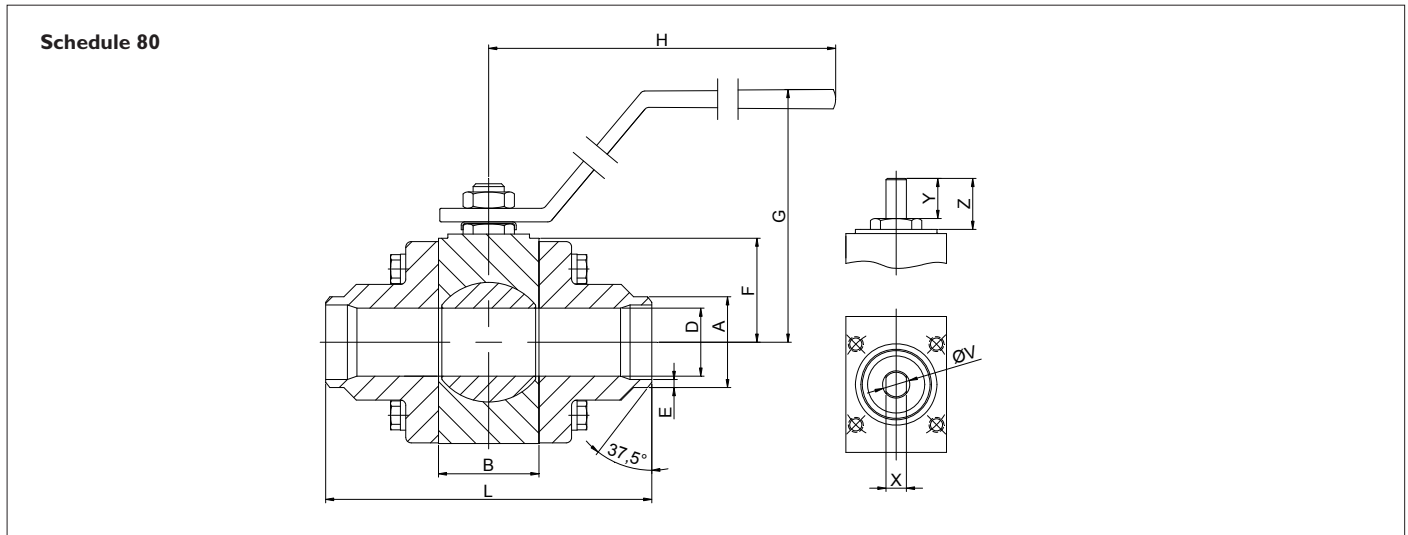


BALL VALVE

AL 36-K256

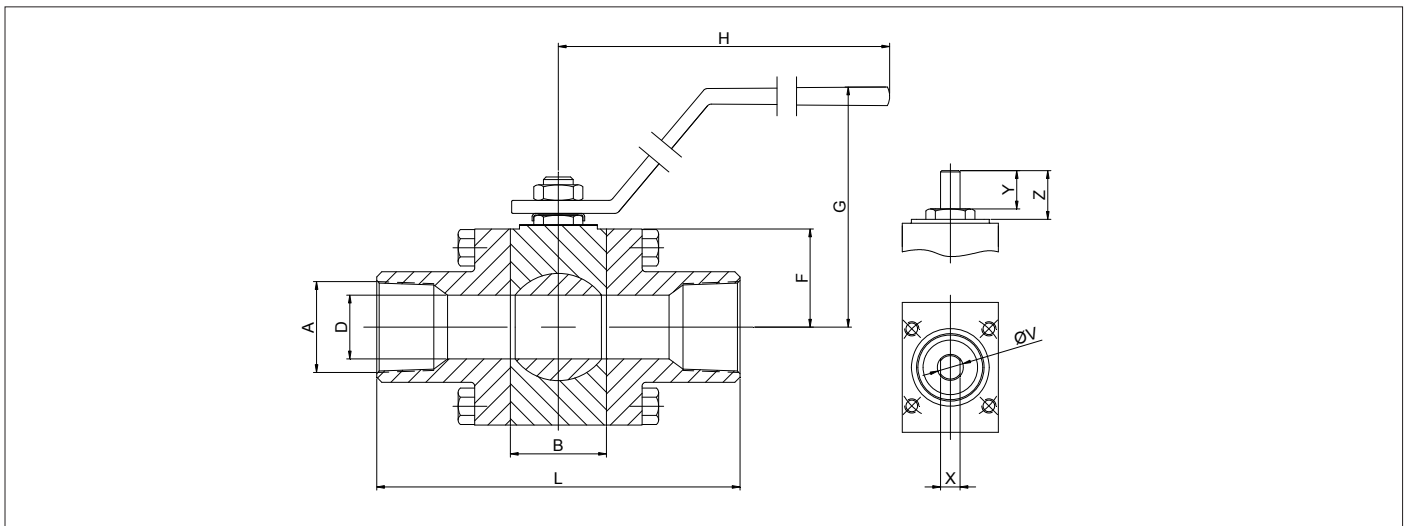
ANSI Class 2500

Dimensions



Weld connection

DN	D	L	E	A	B	F	H	G	V	X	Y	ISO 5211	Nm	Weight kg
15	11,1	216	3,73	21,3	34	31	180	98	12	7,5	10	F03	14	4
20	15,5	229	3,91	26,7	37	41	180	108	12	7,5	11	F04	29	6
25	21	254	4,55	33,4	44	46	220	109	15	9	17	F05	55	8



Thread connection

DN	D	L	A	B	F	H	G	V	X	Y	Z	ISO 5211	Nm	Weight kg
8	11,1	100	1/4"	34	31	180	98	12	7,5	10	14	F03	14	3
10	11,1	100	3/8"	34	31	180	98	12	7,5	10	14	F03	14	3
15	11,1	100	1/2"	34	31	180	98	12	7,5	10	14	F03	14	3
20	15,5	127	3/4"	37	41	180	108	12	7,5	11	12	F04	29	5
25	21	140	1"	44	46	220	117	15	9	17	21	F05	55	6

* Torque (Nm) at room temperature and maximum pressure for the respective pressure class (without any safety factor)

Installation

The valve can be installed in horizontal and vertical pipes. The valve is maintenance free but should be operated at regular intervals depending on the installation. For more information, see instruction manual I.810B_UK.

AXEL LARSSON

Telephone +46 10 455 97 00 • sales@axel-larsson.se • www.axel-larsson.se

Head Office: Truckvägen 12, P.O. Box 805, SE-194 28 Upplands Väsby (Stockholm), Sweden.