

BALL VALVE

AL 29-MS / AL 29-MSV

Metal-to-metal

Description

AL 29-MS is a two-piece metal seated flanged ball valve with full bore and mounting plate according to ISO 5211. Manual operation with lockable hand lever or gear box with handwheel. Free floating ball DN 15-200 and guided ball DN 250-300. The ball and seat are hard coated with chromium carbide on stainless steel (AISI 316). The valve has supported stem and self-adjusting packing.

Applications: Shut-off valve for demanding applications with neutral to aggressive liquids and gases, and media with abrasive solids or slurries. Also for applications with high pressure or high temperature.

Type

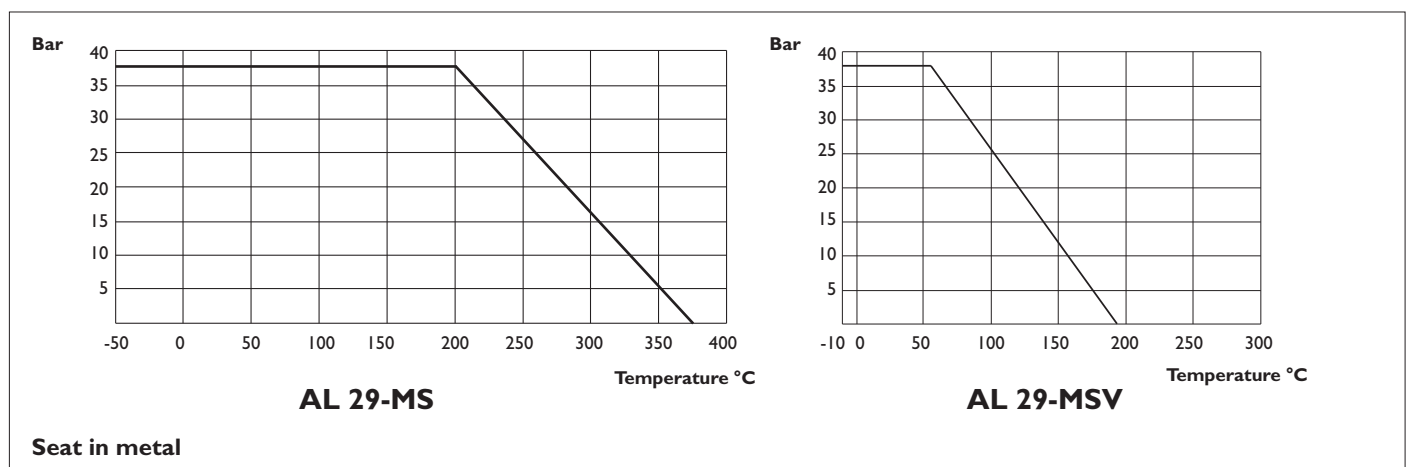
AL 29	Code	PN	DN	Material	Model
MS	04 CGGG	16	15-200	Carbon steel	Free floating spring loaded ball
		40	15-125		
	06 CGGG	16	15-200	Stainless steel	
		40	15-125		
MSV	04 CTT	16	15-200	Carbon steel	Free floating, O-ring Viton
		40	15-100		
	06 CTT	16	15-200	Stainless steel	
		40	15-100		

Marking:	The valve is marked Pekos.
Connection:	Flange
Temperature:	AL 29-MS: -50° – +350°C AL 29-MSV: -10°C – +180°C
Tätthetsklass:	Acc.to API 598, ISO class C, EN 122266 class C, ANSI FCI class V (standard).

Material specification

Detalj	AL 29-MS		AL 29-MSV	
	04 CGGG	06 CGGG	04 CTT	06 CTT
Body	Carbon steel 1.0619	Stainless steel 1.4408	Carbon steel 1.0619	Stainless steel 1.4408
Ball	1.4408+Cr-C			
Metall seats	1.4401+Cr-C			
Stem	1.4401			
Packing ring	Graphite		PTFE	
Body seal	Graphite		PTFE	

Pressure / Temperature



Approvals

- CE/PED 2014/68/EU
- ATEX 2014/34/EU

Optional

- Type AL 29-MSV with EPDM backup O-ring
- Weld- or thread connection
- ANSI
- High temperature up to +600°C
- Stem extension
- Gear box
- Elektric actuator
- Pneumatic actuator

Installation

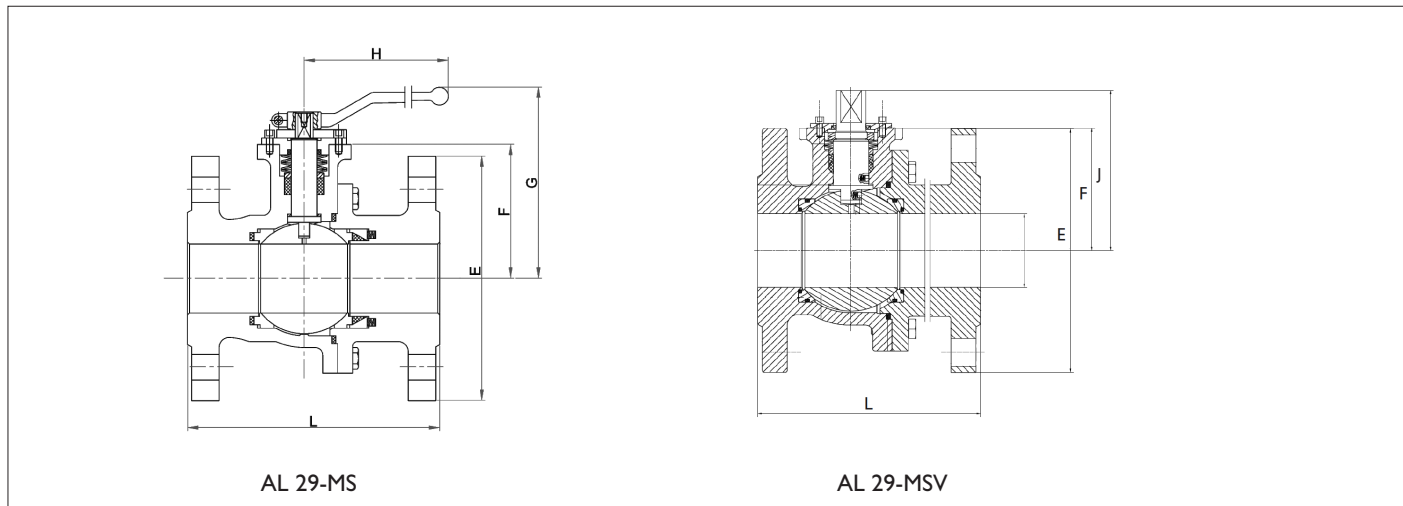
The valve can be installed in horizontal and vertical lines. The valve is maintenance free but should be operated at regular intervals depending on the installation.

BALL VALVE

AL 29-MS / AL 29-MSV

Metal-to-metal

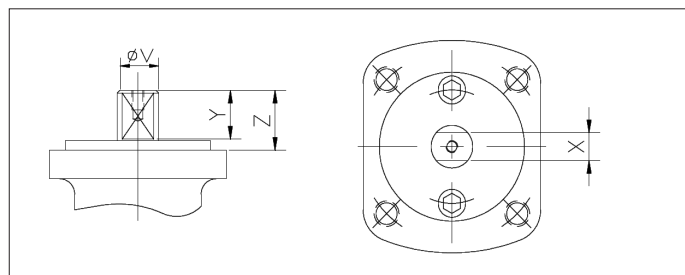
Dimensions



DN	L	E		F	G	H	J	Nm		Weight, kg	
		PN 16	PN 40					PN 16	PN 40	PN 16	PN 40
15	115	95	95	52	100	185	116	10	16	-	3
20	120	105	105	54	102	185	118	14	20	-	3,8
25	125	115	115	60	111	185	33	18	35	-	4,7
32	130	140	140	65	115	185	137	28	45	-	6,5
40	140	150	150	75	130	300	155	55	71	-	8,2
50	150	165	165	83	138	300	163	66	130	-	11,2
65	170	185	185	96	150	300	175	90	195	-	16,2
80	180	200	200	114	187	350	214	150	305	-	22,2
100	190	220	235	128	201	350	228	210	370	27	30,0
125	325	250	270	158	247	680	285	350	845	56	62,0
150	350	285	300	175	264	680	302	480	-	75	-
200	400	340	375	245	334	750	377	880	-	134	-

Mounting plate acc. to ISO 5211

DN	V	X	Y	Z	ISO 5211
15	12	8	13	16	F05
20	12	8	13	16	F05
25	16	10	19	22	F05
32	16	10	19	22	F05
40	20	14	22	25	F07
50	20	14	22	25	F07
65	20	14	22	25	F07
80	25	19	24	27	F10
100	25	19	24	27	F10
125	34	26	35	38	F12
150	34	26	35	38	F12
200	42	32	40	43	F14



AXEL LARSSON

Telephone +46 10 455 97 00 • sales@axel-larsson.se • www.axel-larsson.se

STOCKHOLM | GÖTEBORG | MOTALA | FALUN | UMEÅ

Head Office: Truckvägen 12, P.O. Box 805, SE-194 28 Upplands Väsby (Stockholm), Sweden.