

# STEM EXTENSIONS

## For Pekos ball valves

### Standard version - 2 piece valves

#### For types

- AL 24-PZ
- AL 25-PZ
- AL 26-PZ
- AL 27-PZ

#### Description

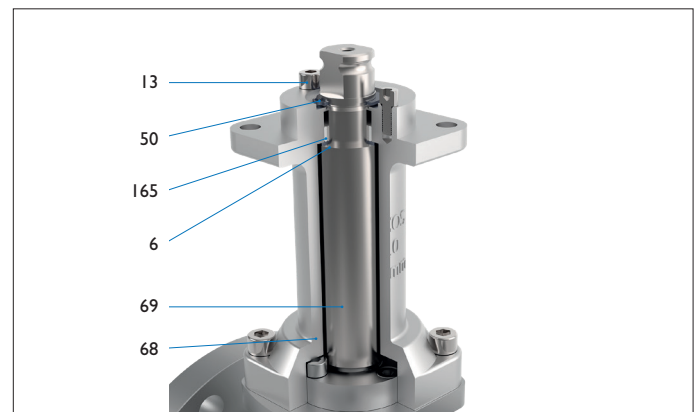
- Standard design can be assembled in Axel Larsson's workshop or on site
- Mechanical extension with top flange ISO 5211 designed for both manual operated and automated valves
- External housing with stem inside which rotate independently, especially useful for isolated pipelines
- Guided stem with soft parts (top and bottom) to ensure lasting over time, especially for automated vales
- Directly mounted on standard valves

#### Options

- Locking device
- Grease injector
- Fugitive emission detector
- Different length upon request
- Other options upon request

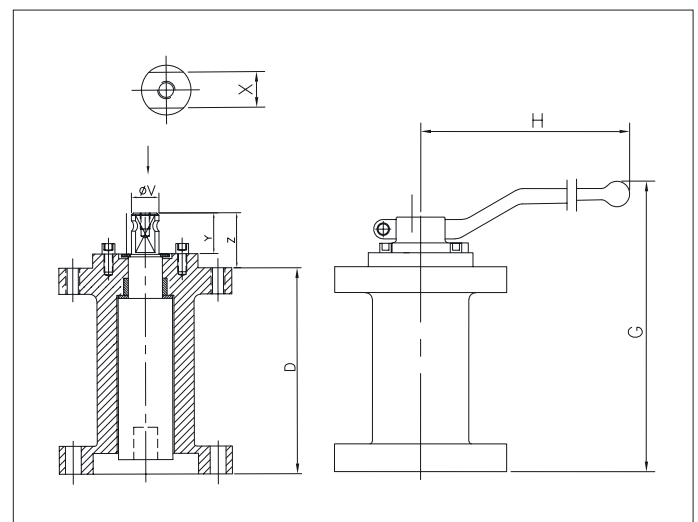
#### Material

Pos	Part	Carbon steel	Stainless steel
6	Stem seal	PTFE modified or equivalent	
13	Bolt	A4-70	
50	Subjection ring	1.4301	
68	Casing extension	A216 WCC	A351 CF8M
69	Stem extension	17-4 PH	
165	Stem ext. guide seal	PTFE modified or equivalent	



#### Dimensions

ISO 5211	H	V	X	Y	Z	Stem length	G	Stem length	G
F05/I	185	14	11	11	14	100	206	150	156
F05/2	185	18	14	17	20	100	206	150	156
F07	295	22	17	20	30	100	220	150	170
F10-I	295	22	17	20	25	100	215	150	165
F10	450	28	22	22	40	100	243	150	193
F12-I	450	28	22	22	36	100	240	150	190
F12	740	36	27	35	50	100	259	150	209
F14-I	740	36	27	36	44	100	253	150	203
F14	750	48	36	40	63	100	267	150	117



# STEM EXTENSIONS

## For Pekos ball valves

### Standard version - 3 piece valves

#### For types

- AL 33-K
- AL 36-K

#### Description

- Standard design can be assembled in Axel Larsson's workshop or on site
- Mechanical extension with top flange ISO 5211 designed for both manual operated and automated valves
- Solution for isolation pipelines: external casing with stem inside
- Guided stem with soft parts (top and bottom) to ensure lasting over time, especially for automated vales
- Directly mounted on standard Pekos type K valves

#### Options

- Locking device
- Grease injector
- Fugitive emission detector
- Different lenght upon request
- Other options upon request

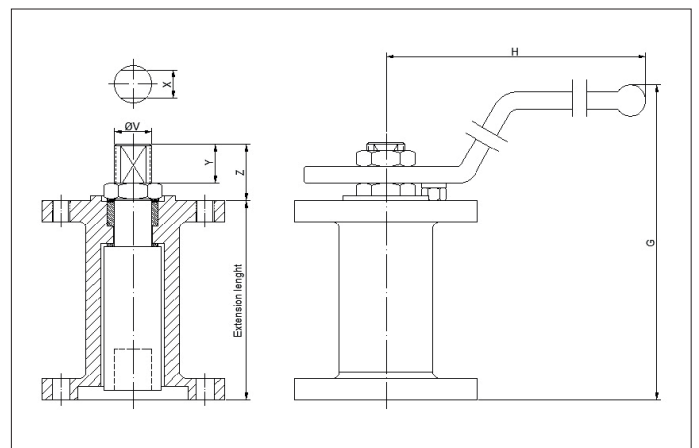
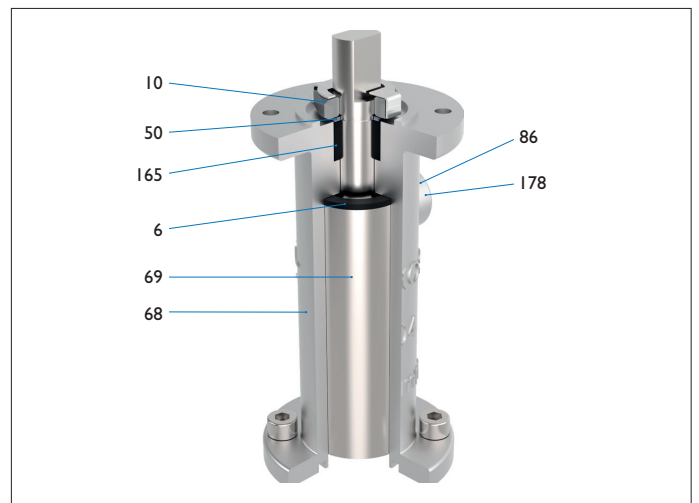
#### Material

Pos	Part	Carbon steel	Stainless steel
6	Stem seal	PTFE + Glass fibre	
10	Stem nut	AISI 304	
50	Subjection ring	A420	
68	Casing extension	A216 WCC	A351 CF8M
69	Stem extension	17-4 PH	
165	Stem ext. guide seal	PTFE + Glass fibre	
86 *	Drain plug	SS 1.4401	
178*	Lantern ring	SS 1.4401	

\* Available upon request

#### Dimensions

ISO 5211	H	V	X	Y	Z	Stem lenght	G	Stem lenght	G
F03	145	10	5,5	8	10	100	155	150	205
F03	145	10	5,5	8	10	100	155	150	205
F04	177	12	7,5	14	20	100	170	150	220
F04	177	12	7,5	14	20	100	170	150	220
F05	218	15	9	21	28	100	175	150	225
F05	218	15	9	21	28	100	175	150	225
F05	218	15	9	21	28	100	175	150	225
F07	425	22	16	21	31	100	175	150	225
F07	425	24	16	19	37	100	185	150	235



# STEM EXTENSIONS

## For Pekos ball valves

### Security stem extension - type F

#### For types

- AL 24-PZ
- AL 25-PZ
- AL 26-PZ
- AL 27-PZ
- AL 29-M
- AL 30-M
- AL 33-K
- AL 36-K

#### Description

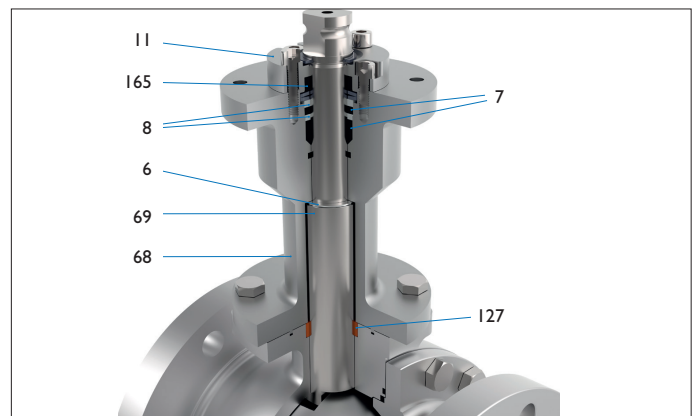
- Security version only factory assembled as a complete unit with valve
- Security stem extension with packing on top to avoid direct contact with the medium
- Stem extension with top flange ISO 521 I designed for both manual operated and automated valves
- Valve and stem extension in one single piece
- 150 mm standard length

#### Options

- Locking device
- Grease injector
- Fugitive emission detector
- Different length upon request
- Other options upon request

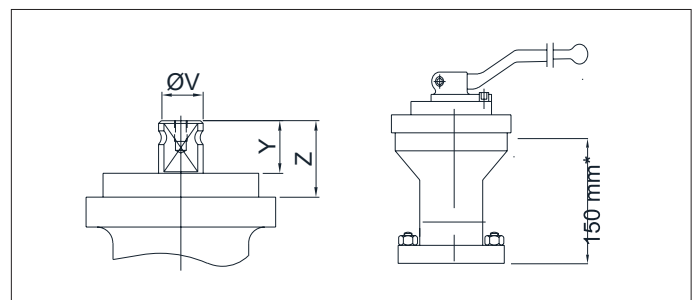
#### Material

Pos	Part	Stainless steel
6	Stem seal	PTFE modified or equivalent
7	Packing	PTFE modified or equivalent
8	Gland packing	SS I.440I
11	Gland flange	SS I.4408
68	Casing extension	SS I.440I
69	Stem	SS I.440I
165	Stem ext. guide seal	PTFE modified or equivalent
127	Stem bearing	PTFE modified or equivalent



#### Dimensions

ISO 521 I	V	X	Y
F05/1	14	11	11
F05/2	18	14	17
F07	22	17	20
F10-1	22	17	20
F10	28	22	22
F12-1	28	22	22
F12	36	27	35
F14-1	36	27	36
F14	48	36	40



# STEM EXTENSIONS

## For Pekos ball valves

### Security stem extension with double packing - type FI

#### For types

- AL 24-PZ
- AL 25-PZ
- AL 26-PZ
- AL 27-PZ
- AL 29-M
- AL 30-M
- AL 33-K
- AL 36-K

#### Description

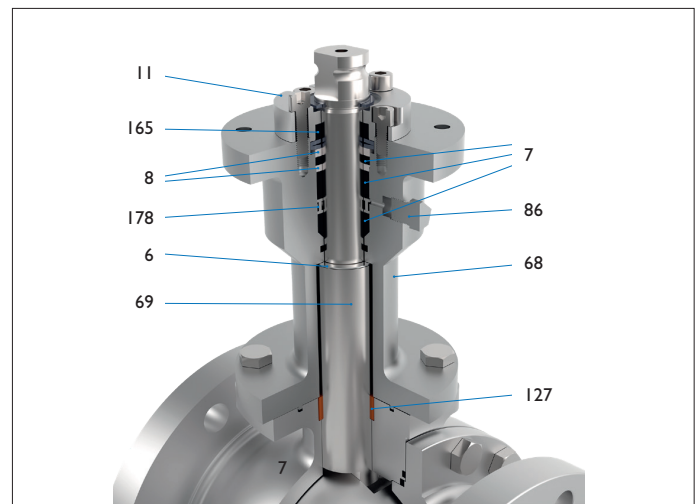
- Safety design only factory assembled as a complete unit with valve
- Security stem extension with double packing on top with lantern system
- Stem extension with top flange ISO 521 I designed for both manual operated and automated valves
- Valve and stem extension in one single piece
- 150 mm standard length

#### Options

- Locking device
- Grease injector
- Fugitive emission detector
- Pressure gauge
- Different length upon request
- Other options upon request

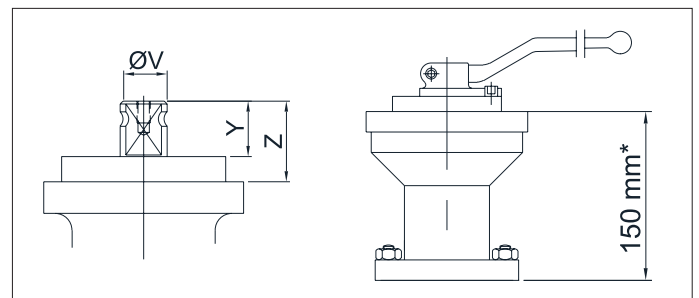
#### Material

Pos	Part	Stainless steel
6	Stem seal	PTFE modified or equivalent
7	Packing	PTFE modified or equivalent
8	Gland packing	SS 1.4401
11	Gland flange	SS 1.4408
68	Casing extension	SS 1.4401
69	Stem	SS 1.4401
86	Drain plug	SS 1.4401
165	Stem ext. guide seal	PTFE modified or equivalent
178	Lantern ring	SS 1.4401
127	Stem bearing	PTFE modified or equivalent



#### Dimensions

ISO 521 I	V	X	Y
F05/1	14	11	11
F05/2	18	14	17
F07	22	17	20
F10-1	22	17	20
F10	28	22	22
F12-1	28	22	22
F12	36	27	35
F14-1	36	27	36
F14	48	36	40



# STEM EXTENSIONS

## For Pekos ball valves

### Simple version - 2 piece valves

#### For types

- AL 24-PZ
- AL 25-PZ
- AL 26-PZ
- AL 27-PZ

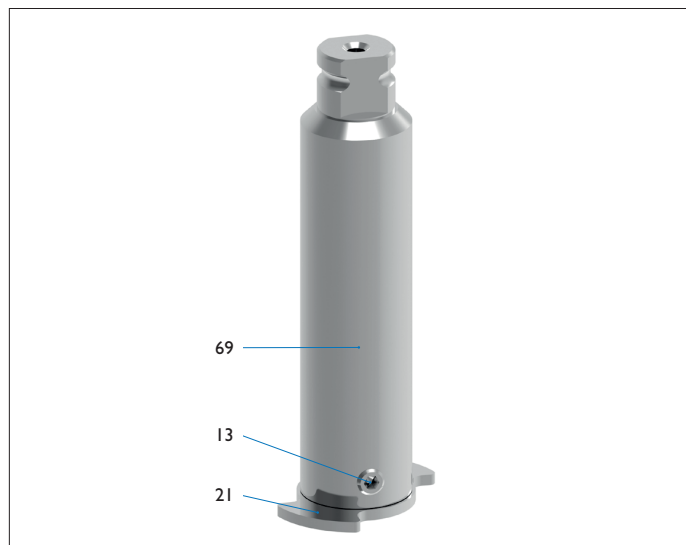
#### Description

- Mechanical extension only suitable for hand-lever operation
- Directly mounted on standard valves
- Mechanical travel-stop: no possibility to add locking device



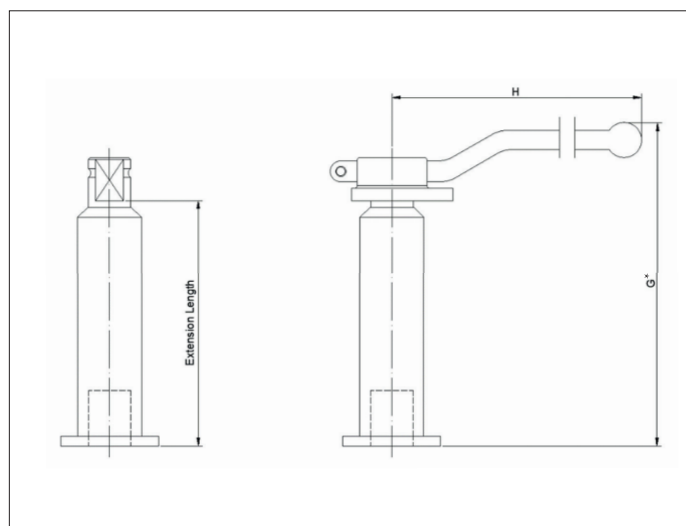
#### Material

Pos	Part	Stainless steel
13	Fixing bolt	A4-70
21	Stop washer	AISI 316
69	Stem extension	1A410 / 1.4021



#### Dimensions

ISO 5211	H	Extension length	G	Extension length	G
F05/1	185	100	155	150	205
F05/2	185	100	155	150	205
F07	295	100	160	150	205
F10	295	100	180	150	230



# STEM EXTENSIONS

## For Pekos ball valves

### Simple version - 3 piece valves

#### For types

- AL 33-K
- AL 36-K

#### Description

- Mechanical extension only suitable for hand-lever operation
- Directly mounted on standard type K valves
- T-handle design
- Mechanical travel-stop: no possibility to add locking device



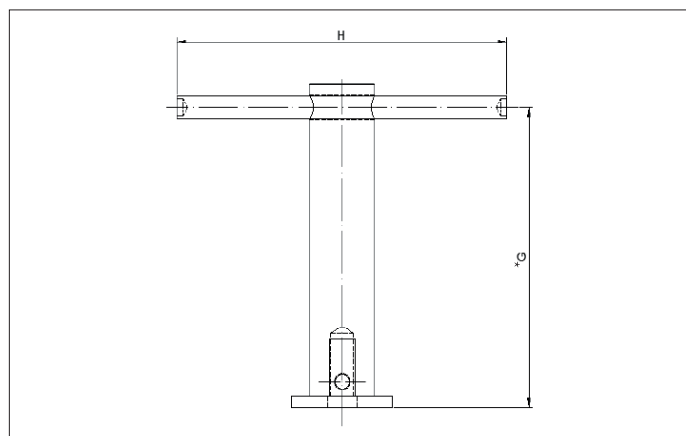
#### Material

Pos	Part	Stainless steel
13	Screw	AISI 304
16	Handle	AISI 304
21	Stop washer	AISI 304
69	Stem extension	AISI 304



#### Dimensions

ISO 5211	H	Extension length	G	Extension length	G
F03	140	100	122	150	-
F03	140	100	122	150	-
F04	150	100	130	150	180
F04	150	100	130	150	180
F05	220	100	140	150	270
F05	220	100	140	150	270
F05	220	100	140	150	270
F07	220	100	140	150	270
F07	220	100	140	150	270



**AXEL LARSSON** 

Telephone +46 10 455 97 00 • sales@axel-larsson.se • www.axel-larsson.se

Head Office: Truckvägen 12, P.O. Box 805, SE-194 28 Upplands Väsby (Stockholm), Sweden.