

KNIFE GATE VALVE

AL 48-XD

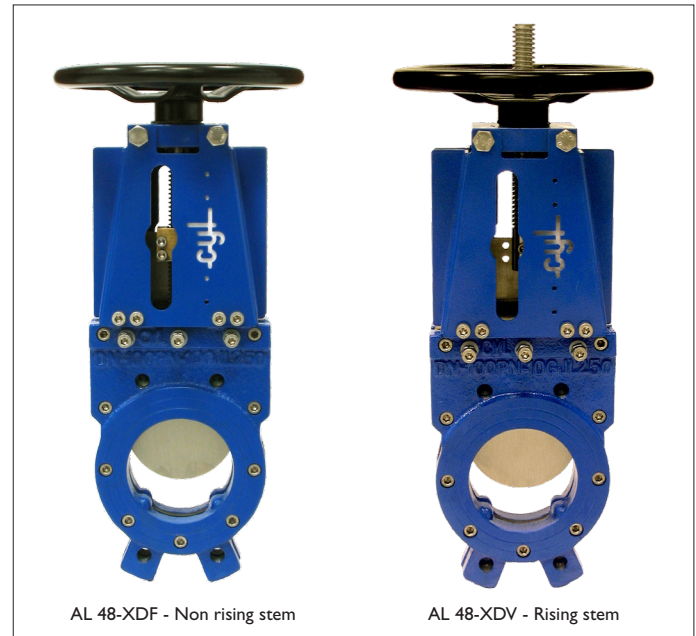
Description

AL 48-XD is a bidirectional type knife gate valve with non rising stem or rising stem. Available dimensions are DN 50-600, for mounting between flanges PN 10. The design gives a free passage for the media and no loss of pressure. The bidirectional design simplifies the installation and eliminates problems with pressure differences in adjoining pipes. Suitable for abrasive media with a high amount of solid particles. The U-shaped seat design improves the tightness. It is easy to change actuator without unassembly the valve.

Pressure / Temperature

Max. working pressure	Max. temperature seat and packing materials
DN 50-200 - 10 bar	NBR +80°C
DN 250-300 - 7 bar	EPDM +90°C
DN 350-400 - 6 bar	Viton +180°C
DN 450-600 - 4 bar	

Upon request max. working pressure 10 bar for DN 200-600.

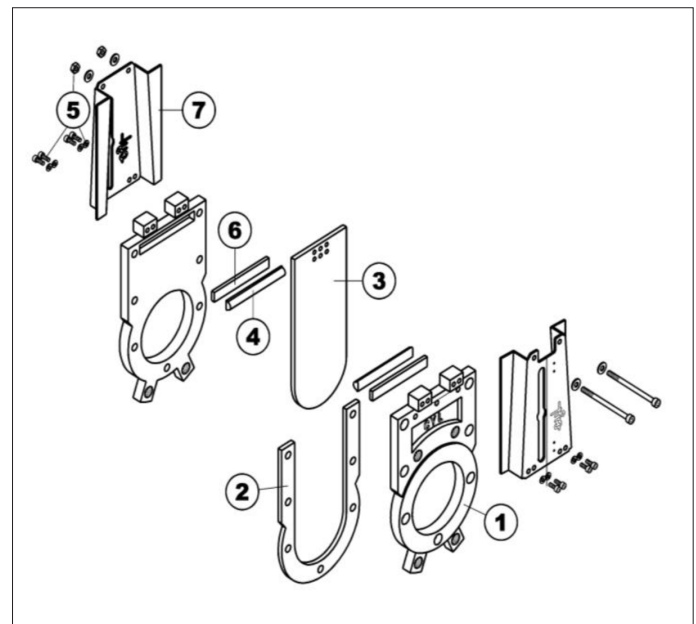


AL 48-XDF - Non rising stem

AL 48-XDV - Rising stem

Part / Material specification

No	Part	Material
1	Body	Ductile iron GJS400 / CF8M Optional: Duplex 2205, SMO 254
2	Seat	NBR Optional: PTFE, Viton, EPDM, Silicone
3	Gate	SS 316 Optional: SS 316L, SS 316TI, DUPLEX 2205, SMO 254
4	Packing	NBR Optional: PTFE, Viton, EPDM, Silicone
5	Screws and nut	A4
6	Push rods	SS 316
7	Plates	I.0580 Optional: SS 316
-	Stem	SS 316
-	Bearing	I.0401 Optional: SS 316
-	Hand wheel	I.0037
-	Pneumatic actuator (type AL 48-XDN)	Aluminium



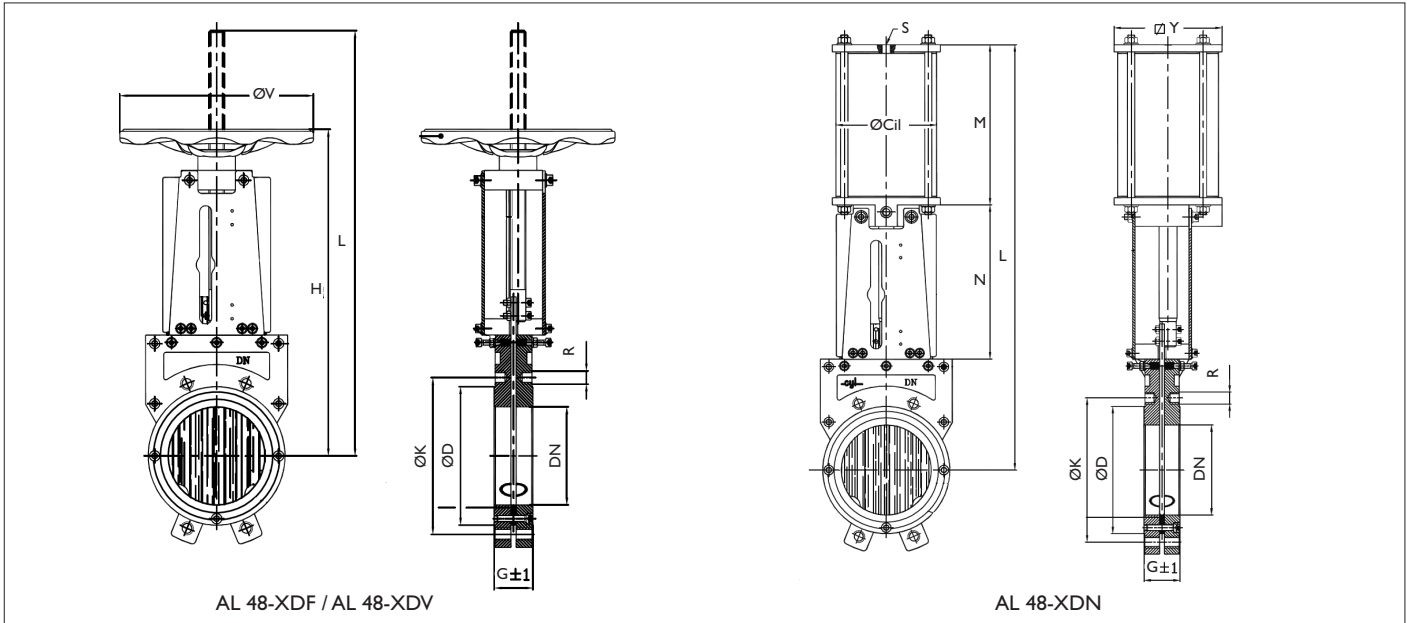
Options

- Pressure class PN 16-64
- Dimension DN 700-1800
- Through going gate
- Scrapers
- Rectangular design
- Modulating design
- Chain wheel operation
- Quick action lever (for DN 50-150)
- Cylinder for water hydraulics
- Gear operator

KNIFE GATE VALVE

AL 48-XD

Dimensions

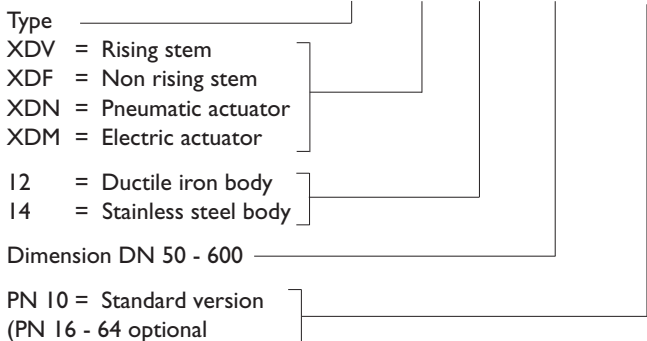


DN	AL 48-XDF / AL 48-XDV								AL 48-XDN*				
	G	H	L	ØD	ØK	R	ØV	Weight	L	ØCil	S	M	N
50	43	267	335	100	125	M-16	175	6	374	80	1/4 G	147	124
65	46	293	376	120	145	M-16	175	7	413	80	1/4 G	160	140
80	46	334	419	135	160	M-16	225	12	461	100	1/4 G	177	161
100	52	371	476	158	180	M-16	225	14	518	100	1/4 G	197	184
125	56	411	541	188	210	M-16	225	18	593	125	3/8 G	232	213
150	56	500	651	212	240	M-20	300	25	709	160	3/8 G	267	257
200	60	602	803	268	295	M-20	300	40	871	190	1/2 G	327	309
250	68	703	954	320	350	M-20	300	60	1020	190	1/2 G	375	359
300	78	835	1137	370	400	M-20	400	79	1194	190	1/2 G	428	426
350	78	921	1273	430	460	M-20	400	125	1351	250	1/2 G	499	462
400	90	1031	1433	482	515	M-24	400	157	1511	250	1/2 G	549	514
450	90	1161	1604	532	565	M-24	500	220	1664	300	1/2 G	590	564
500	95	1271	1779	585	620	M-24	500	260	1838	300	1/2 G	656	624
600	105	1458	2066	685	725	M-27	500	300	2125	300	1/2 G	757	725

Min. air pressure: 6 bar. Max. air pressure: 10 bar. Lubricated air.

Ordering key

AL 48 - XDF - 12 - DN 100 - PN 10



Solenoid valve with adjustable opening/closing time and filter

AL 48	Solenoid valve	Art.no - 24V/=	Art.no - 230/250 Hz
DN 50-125	341P21	9671413C2F	96714133DF
DN 150-300	341P22	9671454C2R	96714543DR
DN 350-600	341V15	9313415C2S	9313415F4S



Telephone +46 10 455 97 00 • sales@axel-larsson.se • www.axel-larsson.se

STOCKHOLM | GÖTEBORG | MOTALA | FALUN | UMEÅ

Head Office: Truckvägen 12, P.O. Box 805, SE-194 28 Upplands Väsby (Stockholm), Sweden.