

# BALL VALVE

## AL 35-77L

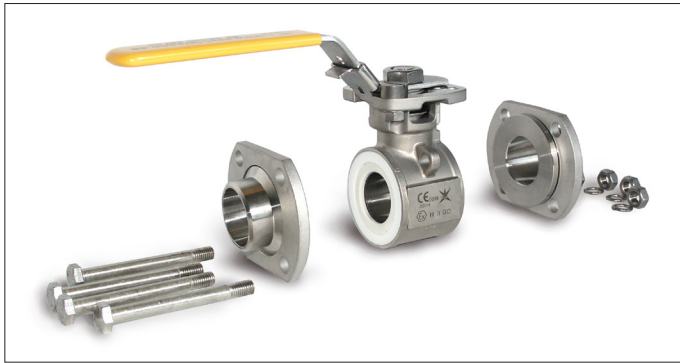
### Rotable end caps

### Description

AL 35-77L is a three-piece ball valve with rotatable welded end caps. Body in stainless steel with full bore and mounting plate according to ISO 5211. Manual operation with hand lever and spring-loaded stem washer or direct mounted actuator. Unique triple-sealing stem seal for long and reliable operation.

**Applications:** Shut-off valve suitable for prefabrication. Industrial applications with neutral to aggressive liquids and gases.

**Marking:** The valve is marked AL 35-77L.  
**Connection:** Roterbara svetsändar  
**Pressure** PN 63 - DN 10-50  
**class:** PN 40 - DN 65-100  
**Pressure:** 40-63 bar  
**Temperature:** -40°–+230°C (see pressure/temperature diagramme)



AL 35-77L is designed with loose rotatable weld ends. When mounting, use the bracket on the housing to facilitate assembly.



### Approvals

- CE/PED 2014/68/EU
- ATEX 2014/34/EU
- TA Luft

### Installation

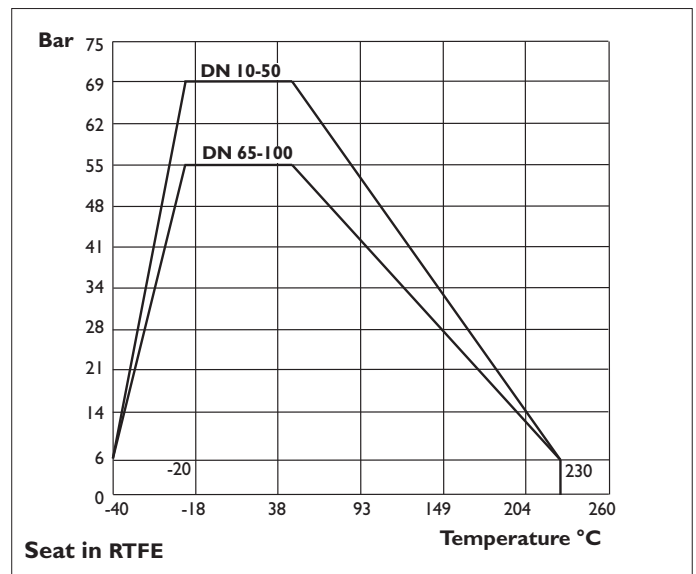
The valve can be installed in horizontal and vertical lines. The valve is maintenance free but should be operated at regular intervals depending on the installation. Welding with short ends: - open valve - spot weld - remove the valve body - finish weld - cool - reassemble. See separate manual for more detailed instructions.

### Optional

- NPT thread
- Limit switch
- Spring return hand lever
- Pneumatic and electric actuators.



### Pressure / Temperature



### Actuator sizing

Media clean water 20°C and 16 bar, safety factor 30%. Supply air 6 bar.

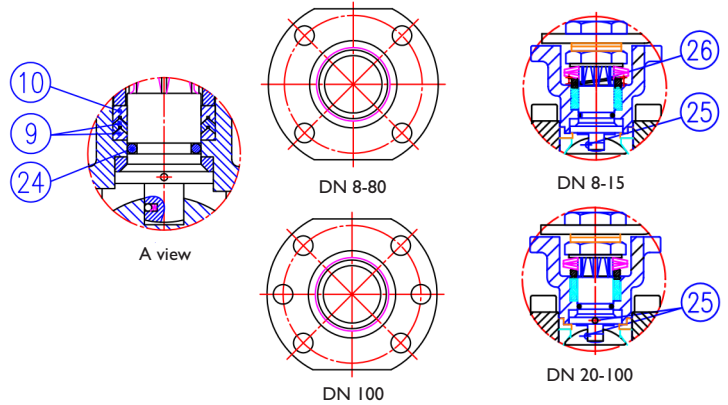
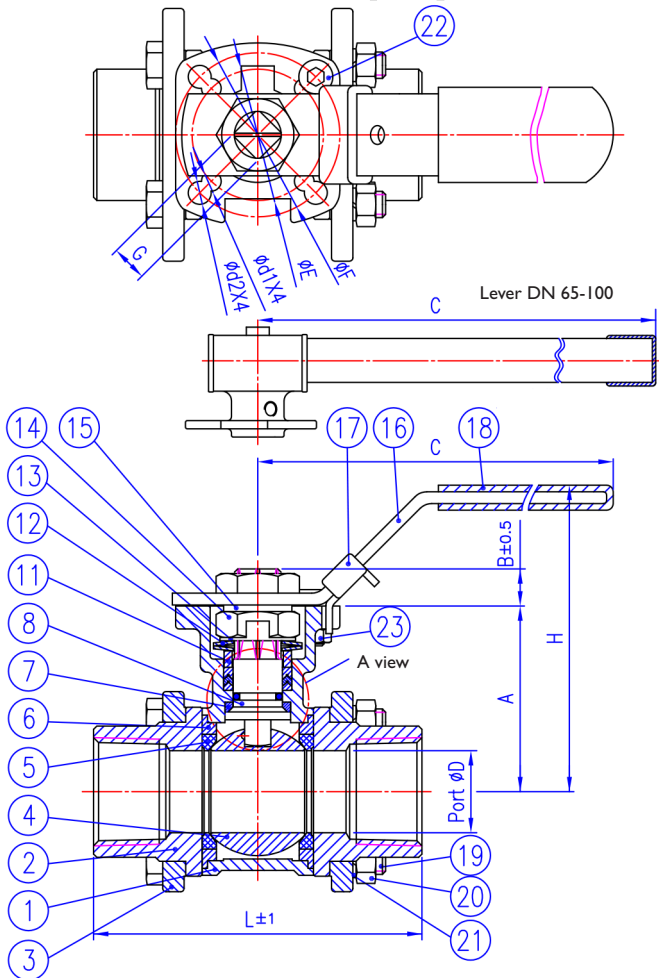
Ventil DN	Moment Nm	AL 77		AL 78	AL 79	
		DA	SR	EI	DA	SR
10	7	210-DA	210-SR	003	045U-DA	101U-SR
15	7	210-DA	210-SR	003	045U-DA	101U-SR
20	8	210-DA	210-SR	003	045U-DA	101U-SR
25	14	210-DA	210-SR	003	051U-DA	101U-SR
32	20	210-DA	220-SR	003	101U-DA	201U-SR
40	29	210-DA	220-SR	005	101U-DA	201U-SR
50	39	220-DA	230-SR	005	101U-DA	251U-SR
65	71	230-DA	240-SR	009	251U-DA	301U-SR
80	127	230-DA	250-SR	015	301U-DA	451U-SR
100	174	240-DA	250-SR	019	351U-DA	451U-SR

# BALL VALVE

## AL 35-77L

### Rotable end caps

### Material specification / Dimensions



No	Part	Qty	Material
1	Body	1	Stainless steel CF8M
2	End cap	2	Stainless steel CF8M
3	Body flange	2	Stainless steel CF8M
4	Ball	1	Stainless steel 316
5	Seat	2	RTFE
6	Joint gasket	2	PTFE
7	Stem seal	1	RTFE
8	Stem	1	Stainless steel 316
9	Gland packing	DN 10-50: 2 DN 65-100: 3	PTFE
10	Gland packing	1	25 % glass fiber filled + PTFE
11	Gland bush	1	Stainless steel 304
12	Belleville washer	2	Stainless steel 301
13	Stop washer	1	Stainless steel 304
14	Stem nut	2	Stainless steel 304
15	Stem washer	1	Stainless steel 304
16	Handle	1	Stainless steel 304
17	Locking device	1	Stainless steel 304
18	Handle sleeve	1	Vinyl
19	Bolt	DN 10-80: 4 DN 100: 6	Stainless steel 304
20	Bolt nut	DN 10-50: 4 DN 65-80: 8 DN 100: 12	Stainless steel 304
21	Bolt washer	DN 10-50: 4 DN 65-80: 8 DN 100: 12	Stainless steel 304
22	Stop pin	1	Stainless steel 304
23	Pin nut	1	Stainless steel 304
24	O-ring	1	Viton
25	Anti-static device	DN 10-15: 1 DN 20-100: 2	Stainless steel 316
26	Spring	1	Stainless steel 316

DN	ØD	A	B	C	ØE	ØF	G	L	H	Ød1	Ød2	ISO 5211	Kv
8	11,6	42,1	6,4	139	36	42	9	70	77	6	6	F03/04	7
10	12,7	42,1	6,4	139	36	42	9	70	77	6	6	F03/04	7
15	15	42,1	6,4	139	36	42	9	70	77	6	6	F03/04	13
20	20	48	6,9	139	36	42	9	85	83	6	6	F03/04	34
25	25	56,6	11,2	165	42	50	11	100	96	6	7	F04/05	60
32	32	60,9	11,2	165	42	50	11	110	100	6	7	F04/05	94
40	38	77,5	14,2	215	50	70	14	125	127	7,5	9	F05/07	213
50	50	85,2	14,2	215	50	70	14	150	134	7,5	9	F05/07	366
65	65	108,7	17,1	300	70	102	17	180	168	10	12	F07/10	595
80	80	117,7	18,1	370	70	102	17	210	176	10	12	F07/10	935
100	100	132,5	17,1	370	70	102	17	230	191	10	12	F07/10	1700



Telephone +46 10 455 97 00 • sales@axel-larsson.se • www.axel-larsson.se

STOCKHOLM | GÖTEBORG | MOTALA | FALUN | UMEÅ

Head Office: Truckvägen 12, P.O. Box 805, SE-194 28 Upplands Väsby (Stockholm), Sweden.